



Key Facts:

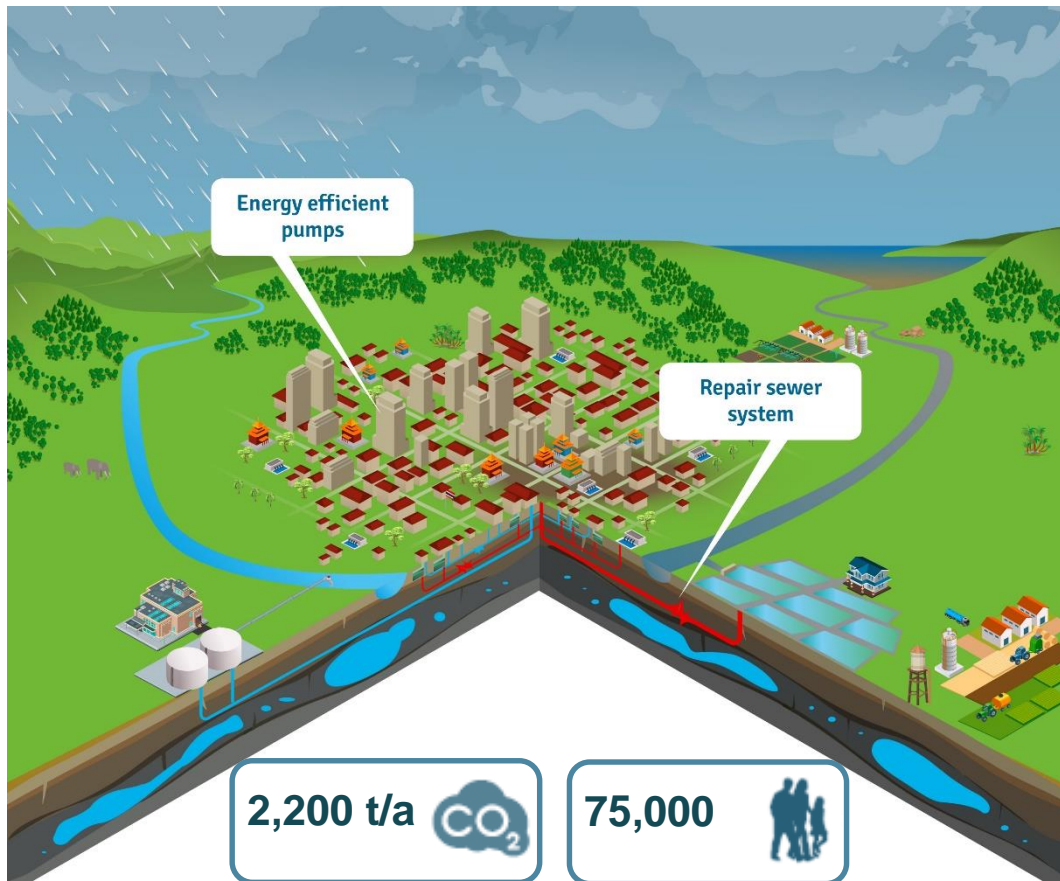
- Country is **highly vulnerable** to effects of climate change
- NDC target: **20% GHG emission reduction** by 2030 compared to BAU
- **~ 50 % GHG emissions** of waste sector come from **wastewater**

ECAM TRAINING ON CLIMATE MITIGATION FOR UTILITY STAFF IN THE THAI WATER SECTOR

- In 2016 ECAM training was held for **more than 30 participants** of different Thai utilities
- Trained utility staff **regularly monitor and report** on performance using ECAM
- Built capacities of national entities as potential **ECAM trainers**
- **Accompanying trainings** for O&M conducted and for financing planned



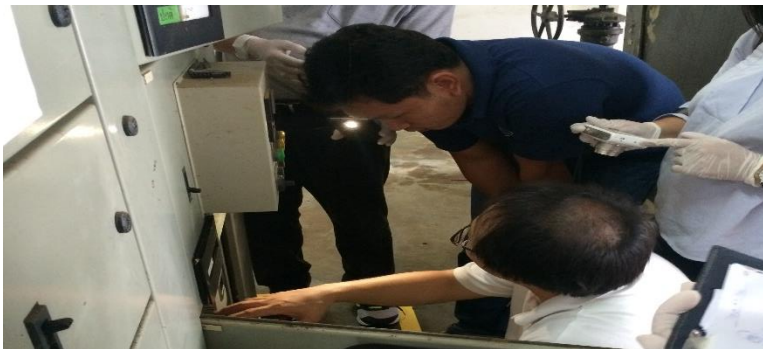
FOLLOWER-UTILITIES USE ECAM TO IDENTIFY GHG MITIGATION MEASURES



- In 2014 pilot utility **Chiang Mai** started using ECAM
- Since 2016 additional utilities in **Hat Yai, Sansuk and Krabi** have joined



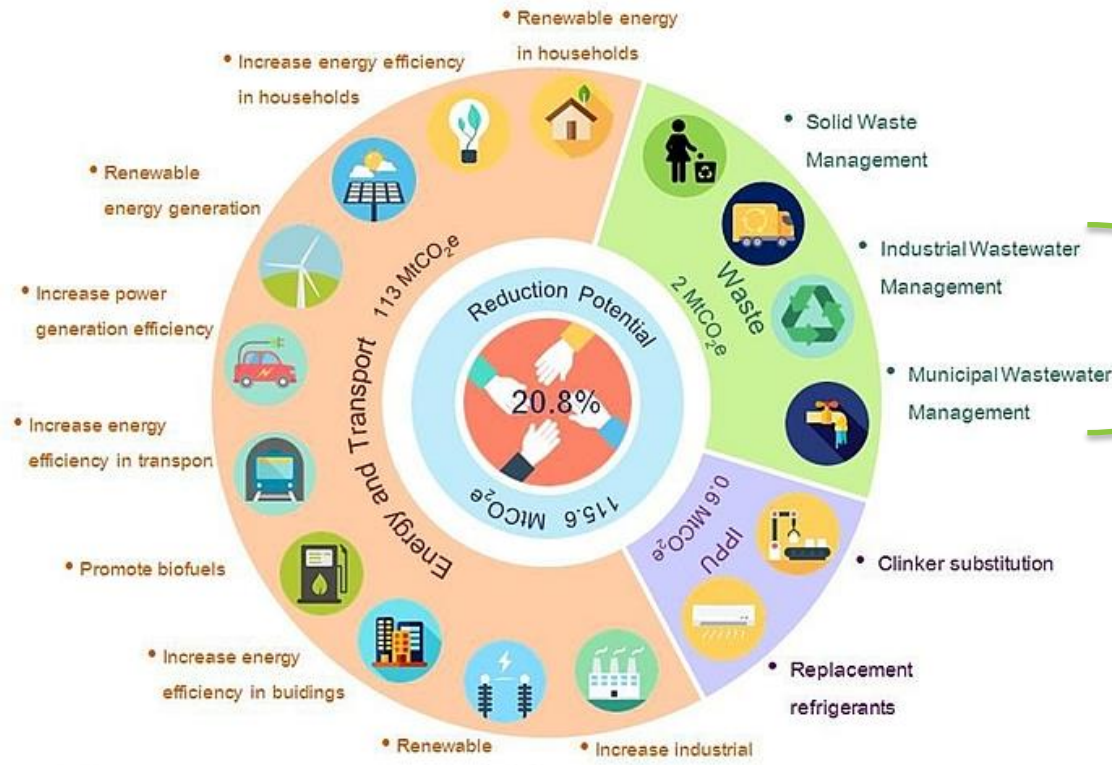
STRENGTHENING CAPACITIES WITH ECAM



- Utility staff is engaged in consultancies
- Data collection and monitoring is supported , a requirement for sound decision making in the water sector

ECAM: SUPPORTING MRV OF THE THAI WASTEWATER SECTOR

Thai NDC Roadmap Targets



Target for Wastewater: 0.7 MtCO₂

Next steps

Industrial Wastewater

Domestic Wastewater

Baseline

Targets

Action Plan

Thailand GHG reduction in domestic wastewater plan
2018 - 2036

Daily GHG Emissions from Wastewater Treatment Plants in Thailand (tCO₂eq./day)

GHG emissions
(tCO₂eq./day)

